

# SLIDING TABLE SAW

## Manual

A sliding table saw is a woodworking machine with a moving table for precise, straight cuts.



## FEATURES

- Powerful 7.5 HP main motor with separate 1 HP scoring motor.
- Manual saw blade rise/fall & tilting, conveniently located on the operator side of the machine.
- Digital display for blade height and RPM.
- Heavy-duty outrigger for strong support of workpiece during cutting operations.
- Metric scales for both rip and crosscut fences.
- Manual lateral and vertical scoring adjustment by externally mounted handles for operator convenience.
- Eccentric hold down clamp, table return handle, and wedge for solid wood ripping included.
- Overhead saw blade guard with built in dust port included (CE-type).

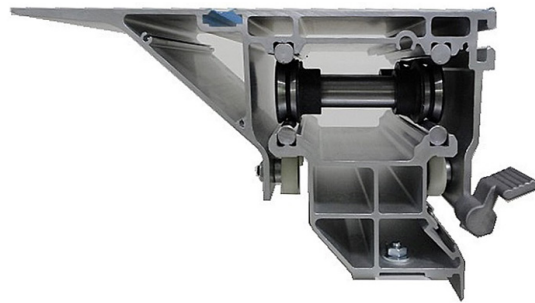
# SLIDING TABLE SAW

## Manual

### SPECIFICATIONS

Main Saw Blade Diameter Max.	Ø350mm (*400mm)
Max. Cutting Height with Blade at 90°	100mm (*125mm)
Max. Cutting Height with Blade at 45°	73mm (*88mm)
Main Blade Height & Tilt Adjustment	Manual
Rectified Cast Iron Fixed Table Dimension	570mm x 1000mm
Main Blade Speed	3000 / 4000 / 5000 RPM
Sliding Table Length	380 x 3200mm
Main Saw Bore	Ø30mm
Main Motor Power	7.5HP with brake
Scoring Saw Blade	Ø120mm
Scoring Motor Power	1HP with brake
Scoring Blade Speed	8000 RPM
Cutting Width	1300mm
Saw Table Extension	370mm
Main Channel Dust Collection	Ø127mm
Saw Guard Dust Collection	Ø76mm

\* = Non CE



# SLIDING TABLE SAW

## Manual

A sliding table saw is a woodworking machine with a moving table for precise, straight cuts.



## FEATURES

- Powerful 7.5 HP main motor with separate 1 HP scoring motor.
- Manual saw blade rise/fall & tilting, conveniently located on the operator side of the machine.
- Digital display for blade height and RPM.
- Heavy-duty outrigger for strong support of workpiece during cutting operations.
- Metric scales for both rip and crosscut fences.
- Manual lateral and vertical scoring adjustment by externally mounted handles for operator convenience.
- Eccentric hold down clamp, table return handle, and wedge for solid wood ripping included.
- Overhead saw blade guard with built in dust port included (CE-type).

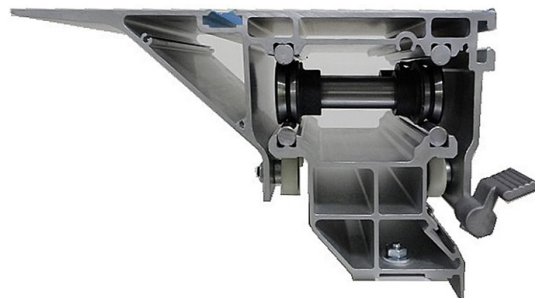
# SLIDING TABLE SAW

## Manual

### SPECIFICATIONS

Main Saw Blade Diameter Max.	Ø350mm (*400mm)
Max. Cutting Height with Blade at 90°	100mm (*125mm)
Max. Cutting Height with Blade at 45°	73mm (*88mm)
Main Blade Height & Tilt Adjustment	Manual
Rectified Cast Iron Fixed Table Dimension	570mm x 1000mm
Main Blade Speed	3000 / 4000 / 5000 RPM
Sliding Table Length	380 x 3800mm
Main Saw Bore	Ø30mm
Main Motor Power	7.5HP with brake
Scoring Saw Blade	Ø120mm
Scoring Motor Power	1HP with brake
Scoring Blade Speed	8000 RPM
Cutting Width	1300mm
Saw Table Extension	370mm
Main Channel Dust Collection	Ø127mm
Saw Guard Dust Collection	Ø76mm

\* = Non CE



# SLIDING TABLE SAW

Motorised

A sliding table saw is a woodworking machine with a moving table for precise, straight cuts.



## FEATURES

- Motorized blade rise/fall.
- Motorized blade tilting with electronic angle display on control panel.
- Motorized scoring saw height and left/right adjustment.
- Powerful 7.5 HP main motor with separate 1HP scoring motor.
- 3 saw blade speeds for optimum cutting results in various materials.
- Precision anodized aluminium sliding table with prismatic rollers running on precision ground steel guides.
- Aluminium extruded crosscut fence with (2) flip stops with convenient angle adjustment for mitre cuts.
- Solid cast iron main table which is ground and polished.
- Heavy-duty outrigger for strong support of workpiece during cutting operations.
- Overhead CE blade guard with dust port.
- Complete with eccentric clamp and wedge for solid wood cutting.

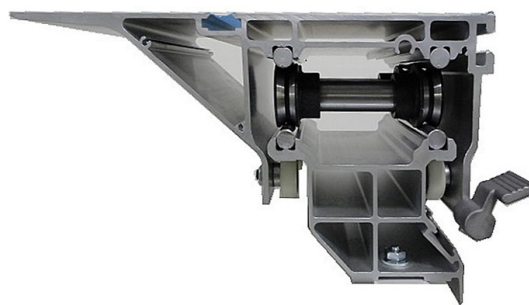
# SLIDING TABLE SAW

Motorised

## SPECIFICATIONS

Main Saw Blade Diameter Max.	Ø350mm (*400mm)
Max. Cutting Height with Blade at 90°	100mm (*125mm)
Max. Cutting Height with Blade at 45°	73mm (*88mm)
Main Blade Height & Tilt Adjustment	Motorised
Rectified Cast Iron Fixed Table Dimension	620mm x 1125mm
Main Blade Speed	3000 / 4000 / 5000 / 6000 RPM
Sliding Table Length	380 x 3200mm
Main Saw Bore	Ø30mm
Main Motor Power	7.5HP with brake
Scoring Saw Blade	Ø120mm
Scoring Motor Power	1HP with brake
Scoring Blade Speed	8000 RPM
Cutting Width	1300mm
Saw Table Extension	670mm
Main Channel Dust Collection	Ø127mm
Saw Guard Dust Collection	Ø76mm

\* = Non CE



# SLIDING TABLE SAW

Motorised

A sliding table saw is a woodworking machine with a moving table for precise, straight cuts.



## FEATURES

- Motorized blade rise/fall.
- Motorized blade tilting with electronic angle display on control panel.
- Motorized scoring saw height and left/right adjustment.
- Powerful 7.5 HP main motor with separate 1HP scoring motor.
- 3 saw blade speeds for optimum cutting results in various materials.
- Precision anodized aluminium sliding table with prismatic rollers running on precision ground steel guides.
- Aluminium extruded crosscut fence with (2) flip stops with convenient angle adjustment for mitre cuts.
- Solid cast iron main table which is ground and polished.
- Heavy-duty outrigger for strong support of workpiece during cutting operations.
- Overhead CE blade guard with dust port.
- Complete with eccentric clamp and wedge for solid wood cutting.

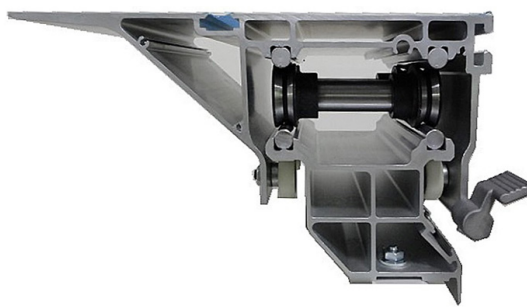
# SLIDING TABLE SAW

Motorised

## SPECIFICATIONS

Main Saw Blade Diameter Max.	Ø350mm (*400mm)
Max. Cutting Height with Blade at 90°	100mm (*125mm)
Max. Cutting Height with Blade at 45°	73mm (*88mm)
Main Blade Height & Tilt Adjustment	Motorised
Rectified Cast Iron Fixed Table Dimension	620mm x 1125mm
Main Blade Speed	3000 / 4000 / 5000 / 6000 RPM
Sliding Table Length	380 x 3800mm
Main Saw Bore	Ø30mm
Main Motor Power	7.5HP with brake
Scoring Saw Blade	Ø120mm
Scoring Motor Power	1HP with brake
Scoring Blade Speed	8000 RPM
Cutting Width	1300mm
Saw Table Extension	670mm
Main Channel Dust Collection	Ø127mm
Saw Guard Dust Collection	Ø76mm

\* = Non CE



# SLIDING TABLE SAW

## NC (Numerical Control)

A sliding table saw is a woodworking machine with a moving table for precise, straight cuts.



## FEATURES

- Programmable rip fence with maximum cutting width of 1300mm by means of a precision ball screw.
- Motorized blade rise/fall.
- Motorized blade tilting with electronic angle display on control panel.
- Overhead touch screen control panel can be adjusted for operator convenience.
- Max 90 preset memory capacity programs.
- Convenient external manual scoring adjustment.
- 7.5 HP main motor with 1HP scoring motor.
- (3) saw blade speeds for optimum cutting results in various materials.
- Precision anodized aluminium sliding table with prismatic rollers running on precision ground steel guides.
- Aluminium extruded crosscut fence with (2) flip stops with convenient angle adjustment for mitre cuts.
- Solid cast iron main table which is ground and polished.
- Heavy-duty outrigger for strong support of workpiece during cutting operations.
- Overhead CE blade guard with dust port.
- Complete with eccentric clamp and wedge for solid wood cutting.

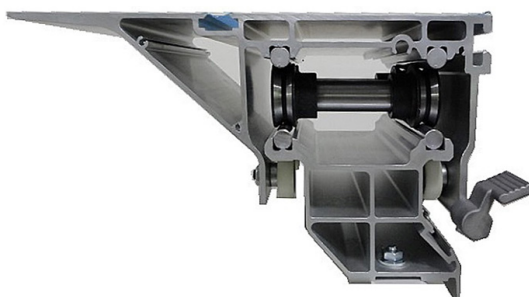
# SLIDING TABLE SAW

## NC (Numerical Control)

### SPECIFICATIONS

Main Saw Blade Diameter Max.	Ø350mm (*400mm)
Max. Cutting Height with Blade at 90°	100mm (*125mm)
Max. Cutting Height with Blade at 45°	73mm (*88mm)
Main Blade Height & Tilt Adjustment	NC (Numerical Control)
Rectified Cast Iron Fixed Table Dimension	570mm x 1000mm
Main Blade Speed	3000 / 4000 / 5000 RPM
Sliding Table Length	380 x 3200mm
Main Saw Bore	Ø30mm
Main Motor Power	7.5HP with brake
Scoring Saw Blade	Ø120mm
Scoring Motor Power	1HP with brake
Scoring Blade Speed	8000 RPM
Cutting Width	1300mm
Saw Table Extension	720mm
Main Channel Dust Collection	Ø127mm
Saw Guard Dust Collection	Ø76mm

\* = Non CE



# SLIDING TABLE SAW

## NC (Numerical Control)

A sliding table saw is a woodworking machine with a moving table for precise, straight cuts.



### FEATURES

- Programmable rip fence with maximum cutting width of 1300mm by means of a precision ball screw.
- Motorized blade rise/fall.
- Motorized blade tilting with electronic angle display on control panel.
- Overhead touch screen control panel can be adjusted for operator convenience.
- Max 90 preset memory capacity programs.
- Convenient external manual scoring adjustment.
- 7.5 HP main motor with 1HP scoring motor.
- (3) saw blade speeds for optimum cutting results in various materials.
- Precision anodized aluminium sliding table with prismatic rollers running on precision ground steel guides.
- Aluminium extruded crosscut fence with (2) flip stops with convenient angle adjustment for mitre cuts.
- Solid cast iron main table which is ground and polished.
- Heavy-duty outrigger for strong support of workpiece during cutting operations.
- Overhead CE blade guard with dust port.
- Complete with eccentric clamp and wedge for solid wood cutting.

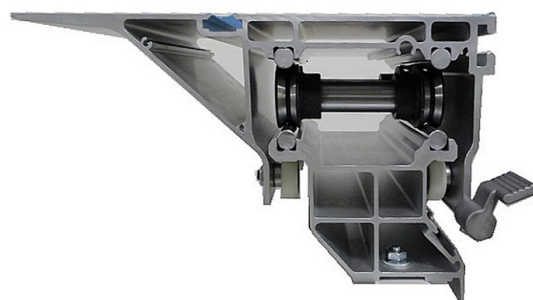
# SLIDING TABLE SAW

## NC (Numerical Control)

### SPECIFICATIONS

Main Saw Blade Diameter Max.	Ø350mm (*400mm)
Max. Cutting Height with Blade at 90°	100mm (*125mm)
Max. Cutting Height with Blade at 45°	73mm (*88mm)
Main Blade Height & Tilt Adjustment	NC (Numerical Control)
Rectified Cast Iron Fixed Table Dimension	570mm x 1000mm
Main Blade Speed	3000 / 4000 / 5000 RPM
Sliding Table Length	380 x 3800mm
Main Saw Bore	Ø30mm
Main Motor Power	7.5HP with brake
Scoring Saw Blade	Ø120mm
Scoring Motor Power	1HP with brake
Scoring Blade Speed	8000 RPM
Cutting Width	1300mm
Saw Table Extension	720mm
Main Channel Dust Collection	Ø127mm
Saw Guard Dust Collection	Ø76mm

\* = Non CE





PS-320C

PS-380C

PS-320M

PS-380M

PS-320S

PS-380S

Specifications	Sliding Table Saw – Manual		Sliding Table Saw – Motorised		Sliding Table Saw – NC (Numerical Control)	
Main Controls	Hand type at front of machine		Electronic type at front of machine		Hang type Touch Screen	
Main Saw Blade Diameter Max.	Ø350mm (*400mm)		Ø350mm (*400mm)		Ø350mm (*400mm)	
Max. Cutting Height with Blade at 90°	100mm (*125mm)		100mm (*125mm)		100mm (*125mm)	
Max. Cutting Height with Blade at 45°	73mm (*88mm)		73mm (*88mm)		73mm (*88mm)	
Main Blade Height & Tilt Adjustment	Manual		Motorised		NC	
Main Blade Speed	3000 / 4000 / 5000 RPM		3000 / 4000 / 5000 / 6000 RPM		3000 / 4000 / 5000 RPM	
Sliding Table Length	380 x 3200mm	380 x 3800mm	380 x 3200mm	380 x 3800mm	380 x 3200mm	380 x 3800mm
Main Saw Bore	Ø30mm					
Main Motor Power	7.5HP with brake					
Scoring Saw Blade	Ø120mm					
Scoring Motor Power	1HP with brake					
Scoring Blade Speed	8000 RPM					
Scoring Blade Height and Side Adjustment	Manual		Motorised		NC	
Cutting Width	1300mm					
Cutting Width adjustment	Manual		Motorised		NC	

\* = Non CE