

## FALCON

Wanescan



**Falcon II** is a high-performance scanner designed for the complete detection of wane profiles in transverse transport.

The system reliably identifies dimensional deviations, wane, and irregular or rough board edges. Using precise sensor technology, it captures the exact position, tilt, and depth of the wane edge and reconstructs the full contour of each board. These detailed measurements form the basis for optimized downstream processes such as sorting, edging, and trimming.

Optionally, the system can be equipped with additional sensors, transforming it into a full-featured quality scanner Eagle.

For cost-sensitive applications, a version with texture-only detection is available. This configuration enables manual post-optimization as an economical alternative to fully automatic quality scanning. In this semi-automatic setup, valuable wood cuts can also be targeted and prepared efficiently.

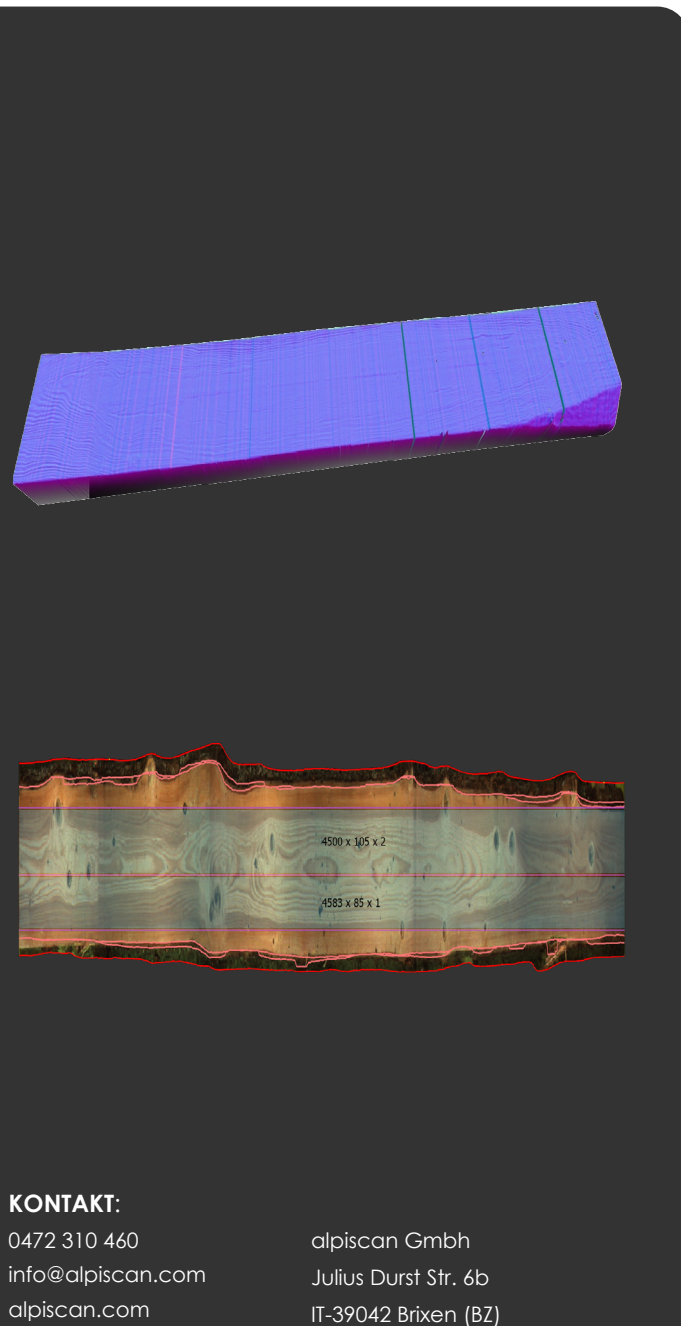
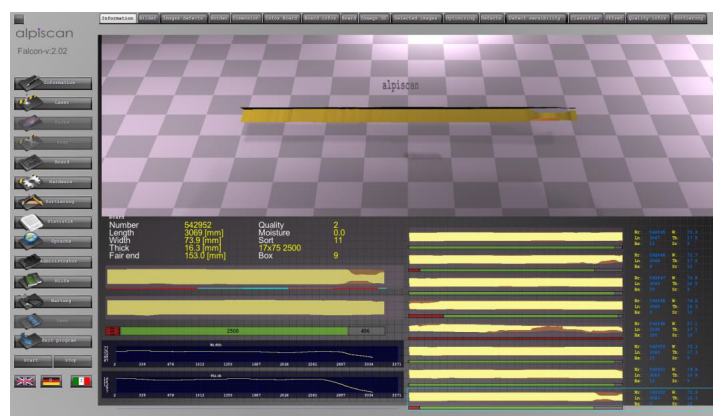
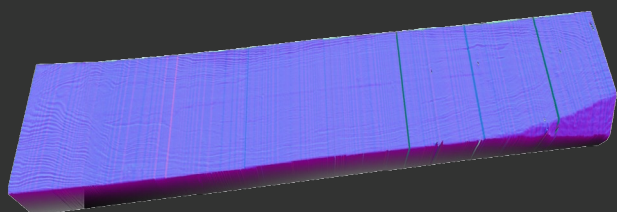


## Specification

Information	Specification
Transport	transversal
Max. Geschwindigkeit	up to 600 m/min
Length	700 – 10.000 mm
Thickness	5 – 400 mm
Width	20 – 1500 mm
Processing time	< 200 ms
Dimension	Full-profile reconstruction of boards, including detection of spring twist and cup
Defects	Cracks, holes, and missing wood

## Key Features

- **Full-surface measurement**  
Complete 3D reproduction of boards
- **Precise detection** of dimensional deviations, wane, and rough/irregular edges
- **Accurate measurement** of wane edge position, tilt, and depth
- **Optional upgrade** to Eagle quality scanner with additional sensor modules
- **Alternative version** with texture detection for manual post-optimization
- **Fast optimization:**  
Measurement completed in just 200 ms
- **Real-time visualization:**  
Immediate display of boards and detected features in the **user interface**
- **Simple, intuitive user interface:**  
Enables quick training and smooth operation



**KONTAKT:**  
0472 310 460  
info@alpiscan.com  
alpiscan.com

alpiscan GmbH  
Julius Durst Str. 6b  
IT-39042 Brixen (BZ)